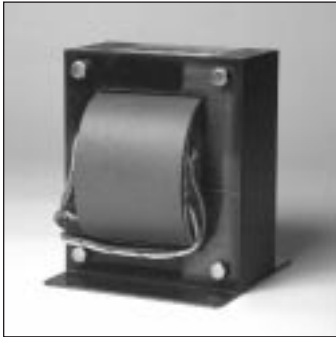


ON SERIES® 2110 EXTENDED RUNTIME UPS: For many, conventional UPSs are “good enough.” But some find ordinary protection measures inadequate. Others face performance expectations with no tolerance for downtime. ON Series Power Conditioned UPSs are engineered to satisfy these demanding applications.



ONEAC's low impedance, isolation transformer provides a level of protection superior to surge suppressor and filter based systems — provides greater assurance of system reliability.

Ultimate assurance of system reliability

All UPS makers acknowledge the broad range of power disturbances that compromise system reliability. And all address them to some degree. But here's the difference — ONEAC's proprietary power conditioning technology eliminates power problems entirely. Providing a level of protection that even the highest quality surge suppressor and filter technology cannot match.

Exceptionally dependable battery backup

We start with premium quality batteries. Thermally isolate them for maximum life. And employ unique charging circuitry attuned to the specific battery characteristics of each model to speed recovery and minimize stress on batteries.

Proven durability, backed by a 5-year warranty

ONEAC UPSs robust design is impervious to the harshest electrical environments. Designed and manufactured under ISO9001 quality procedures, ON Series UPSs are exceptionally reliable. With an average mean time between failures more than twice as long as leading competitors. No surprise, then, that we back our UPSs with greater confidence — 5 years on all power and control systems, 2 years on the battery sub-system.



Rear Mount Battery Connections

Front Mount Battery Connections

- **Extended runtime:** for applications requiring up to 8 hours of battery backup time
- **Full-time, on-line isolating transformer:** eliminates all power contaminants
- **ONBoost™:** compensates for momentary voltage drops, conserves batteries
- **Field upgradeable communications:** for status indication, advanced diagnostics & remote management
- **On-site, on-line replaceable battery:** minimizes cost and downtime
- **Automatic self test:** ensures battery and system readiness
- **5 year warranty:** the longest in the industry

ON SERIES 2110 EXTENDED RUNTIME UPS: Specifications

Power Conditioning

ONEAC's unique power conditioning architecture provides superior protection against the full range of power line disturbances. Components include:

Full output isolation: ONEAC's proprietary transformer design integrates power conditioning magnetics and voltage conversion magnetics in a single compact unit. Provides superior protection against lightning and other high energy surges.

Virtual Kelvin Ground®: Eliminates the full spectrum of conducted power line noise (from 50 kHz to 10 MHz) in all modes, reduces the effect of electrostatic discharge (ESD) and provides an exceptionally clean, signal reference ground for electronic systems.

Communications Options (field upgradeable)

Basic Communications Card provides standard protocols recognized by UPS monitoring software supplied with Windows NT, NetWare and Banyan operating systems. (Signals include RS232 voltages and form 'C' relay contacts.)

Advanced Communications Card uses ONEAC's content-rich ASCII packets to communicate with ONEAC's MopUPS family of UPS monitoring software for NetWare, OS/2 and a full catalog of UNIX operating systems.

SNMP Card is an ethernet network interface card with embedded SNMP UPS agent. MIB II compliant, supports standard UPS MIB, RFC1628 advanced conformance group.

Approvals

Models for North America are FCC Class A certified and listed under UL 1778 and CSA22.2 safety standards.

Performance Characteristics

Nominal input voltage: 120 Vac, 60 Hz

Surge voltage withstand capability: ANSI/IEEE C62.41 Category A&B, 6 kV/200 & 500 Amp, 100 kHz ringwave

Surge voltage let-through (max): less than 10V Normal mode (L-N), less than 0.5 V Common mode (N-G) when subjected to 6kV ANSI/IEEE C62.41 Cat. A

Normal & common mode clamping response time: instantaneous

Transfer time (typical/max): < 3.0 / 3.5 milliseconds

On-battery output voltage: stepped approximation to a sinewave

ONBoost™: boosts output voltage 19% above input voltage if between -24% & -15% of nominal

Load power factor range (crest factor): UPS .85 to 1.0 (3) — will support loads rated 0.5 to 1.0 (<5)

Batteries: sealed, maintenance-free lead acid with a 3-6 year typical lifetime

Recharge time to 60% available capacity: 4 hours per battery cabinet

Ambient operation: 10,000 ft. (3,000) meters) max elevation, 0-95% humidity non-condensing, 32-104° F (0-40° C)

All units have temperature sensitive chargers and provide thermal isolation for battery pack.

ONEAC is a UL/BSI registered corporation — Certification No. A2900



SERIES	ON2110*	Battery Cabinet**	
Maximum Capacity (volt-amps, watts)	2000, 1700	n/a	
Batteries	n/a	eight 12V, 17AH	[two units with four each]
Maximum dimensions (H)	10.5" (27 cm)	7.0" (18 cm)	[2@ 3.5" (9cm) each]
Maximum dimensions (W)	19" (48 cm)	19" (48 cm)	
Maximum dimensions (D)	19.5" (50 cm)	19.5" (50 cm)	
Net weight — lbs. (kg)	100 (45)	146 (66)	[2@ 73 lbs. (33) each]
Shipping weight — lbs. (kg)	105 (48)	156 (72)	[2@ 78 lbs. (36) each]
Input connector	L5-30P		
<i>Other plugs and sockets available on request</i>			
Output sockets:	(8) 5-15R	n/a	

# BATTERY CABINETS** 1					
	2	4	6	8	
VA LOAD	RUNTIME (HOURS:MINUTES)				
200	5:15	7:13			
400	3:05	8:10			
600	2:00	4:30			
800	1:20	3:50	8:01		
1200	1:02	2:37	6:04	8:40	
1600	0:45	2:06	4:17	6:48	
1850	0:40	1:40	3:29	5:42	8:05
2000	0:30	1:20	2:30	4:00	5:30

*For front mounted battery connections, order part number ON2110A-RM-SBF and ON2110-RM-BPF. For rear mounted battery connections, order part number ON2110A-RM-SB and ON2110-RM-BP. These part numbers include the optional Basic communications card. Systems are also available with no communications or with Advanced or SNMP communications. Contact ONEAC for details.

**ON2110 battery cabinet ships as two units. Both units must be installed.

(800) 327 8801 EXT. 2 in USA AND CANADA

+44 0 1235 534721 in UK AND EUROPE

27944 N. Bradley Road, Libertyville, IL 60048 Phone 847 816-6000 FAX 847 680-5124

18 & 20 Blacklands Way, Abingdon Business Park, Abingdon, Oxfordshire OX14 1DY, UK FAX +44 0 1235 534197